

A photograph of a recording studio. In the center is a white mixing console with two large computer monitors displaying software. To the left is a white cart with a microphone on a stand. To the right is a tall white rack filled with audio equipment. The room has wood-paneled walls and a wooden floor.

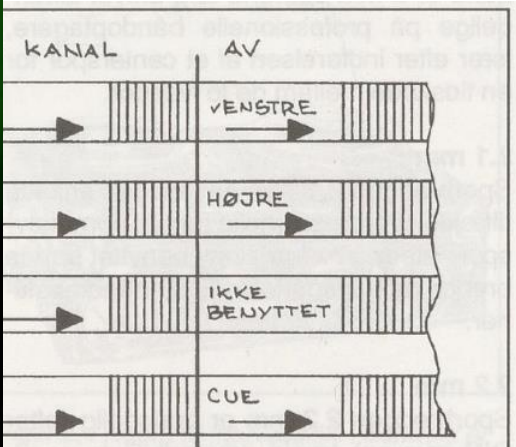
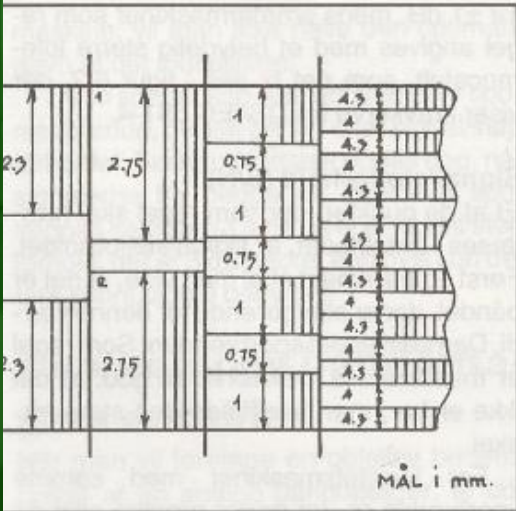
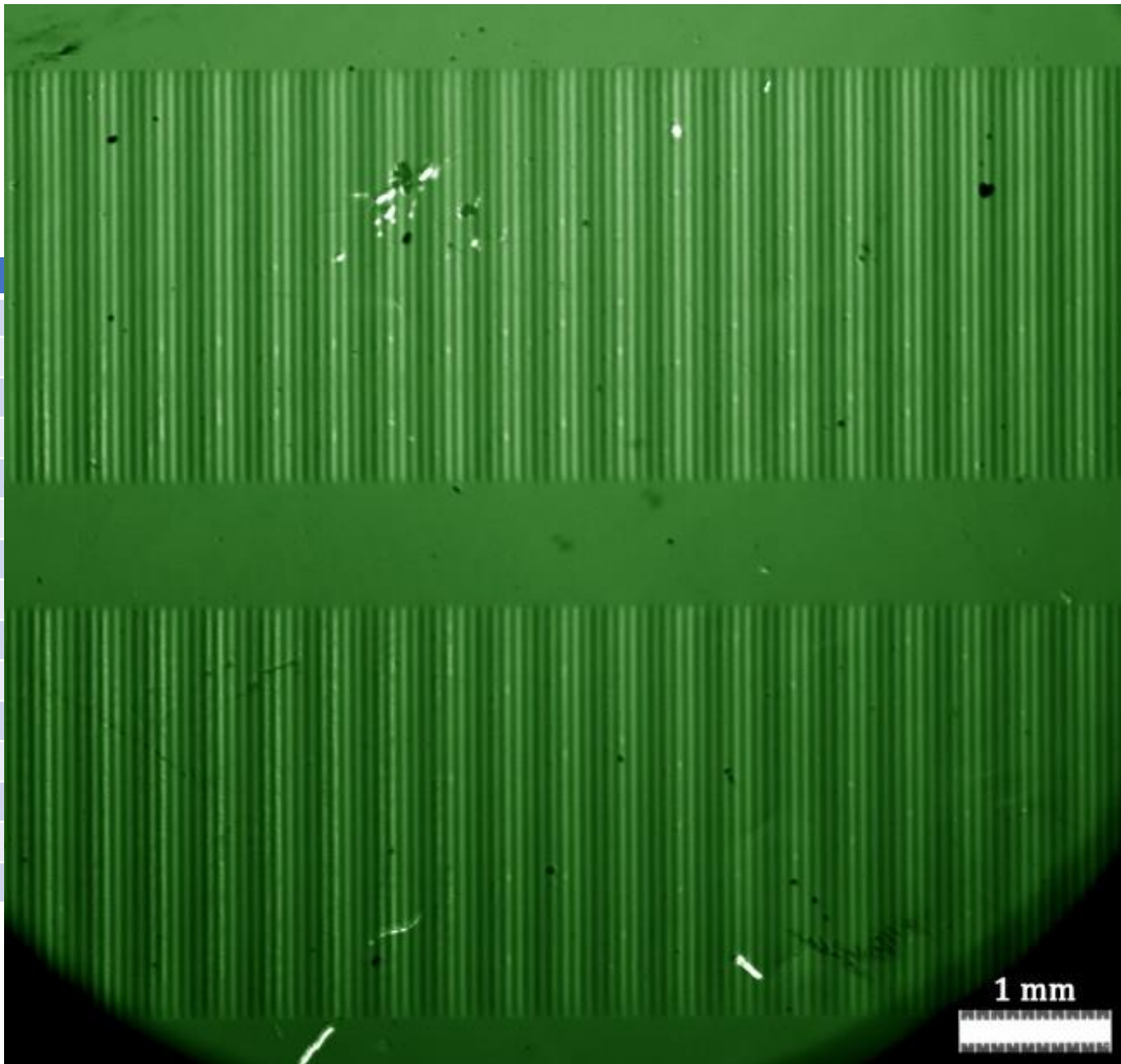
# Avspillingsutstyr

---

Hva gjør vi?



Tape	Tracks
1/4"	1
1/4"	1
1/4"	1
1/4"	2
1/4"	2
1/4"	2
1/4"	2
1/4"	2
1/4"	2
1/4"	2
1/4"	4
1/4"	4
1/2"	2
1/2"	2
1/2"	3



# Dekoding

30 ips, 76 cm/s	IEC2 AES	(1981) current standard	∞	17.5 μs
30 ips, 76 cm/s	CCIR IEC1 DIN	(1953–1966) (1968) (1962)	∞	35 μs
15 ips, 38 cm/s	IEC1 CCIR DIN BS	(1968) current standard (1953) (1962)	∞	35 μs
15 ips, 38 cm/s	NAB EIA	(1953) current standard 1963	3180 μs	50 μs
7½ ips, 19 cm/s	IEC1 DIN(studio) CCIR	(1968) current standard 1965 1966	∞	70 μs
7½ ips, 19 cm/s	IEC 2 NAB DIN(home) EIA RIAA	(1965) current Standard (1966) (1963) (1968)	3180 μs	50 μs
7½ ips, 19 cm/s	Ampex (home) EIA (proposed)	(1967)	∞	50 μs
7½ ips, 19 cm/s	CCIR IEC DIN BS	(up to 1966) (up to 1968) (up to 1965)	∞	100 μs
3¼ ips 9.5 cm/s	IEC2 NAB RIAA	(1968) current standard (1965) (1968)	3180 μs	90 μs
3¼ ips 9.5 cm/s	DIN	(1962)	3180 μs	120 μs
3¼ ips 9.5 cm/s	DIN	(1955–1961)	∞	200 μs
3¼ ips 9.5 cm/s	Ampex (home) EIA (proposed)	(1967)	∞	100 μs
3¼ ips 9.5 cm/s	IEC	(1962–1968)	3180 μs	140 μs
3¼ ips 9.5 cm/s	Ampex	(1953–1958)	3180 μs	200 μs
17/8 ips 4.75 cm/s	IEC DIN	(1971) current standard (1971)	3180 μs	120 μs
17/8 ips 4.75 cm/s	IEC DIN RIAA	(1968–1971) (1966–1971) (1968)	1590 μs	120 μs
17/8 ips 4.75 cm/s cassette	IEC Type I	1974 current standard	3180 μs	120 μs
17/8 ips 4.75 cm/s cassette	DIN Type I	(1968–1974)	1590 μs	120 μs
17/8 ips 4.75 cm/s cassette	Type II and IV	(1970) Current standard	3180 μs	70 μs
15/16 ips 2.38 cm/s	undefined			

0005107-0001-3

3 of 3

ONIL



M01 19950201

1. Betong stål og glass
2. C. jam.
3. Ny

**THE FOLLOWING IS MADE IN LIEU OF ALL WARRANTIES, EXPRESS OR IMPLIED:**

Seller's and manufacturer's only obligation shall be to replace such quantity of the product proved to be defective. Neither seller nor manufacturer shall be liable for any injury, loss or damage, direct or consequential, arising out of the use of or the inability to use the product. Before using, user shall determine the suitability of the product for his intended use, and user assumes all risk and liability whatsoever in connection therewith. The foregoing may not be altered except by an agreement signed by officers of seller and manufacturer.

MADE IN U. S. A. BY MINNESOTA MINING & MFG. CO., MAGNETIC PRODUCTS DIVISION

**3M**  
COMPANY

Professional quality at a popular price!

Egil Monn Iversen A.s  
Malerhaugvn. 20  
Oslo - Norway  
Phone 67 67 92

HIGH FIDELITY RECORDING

Recording Curve	Speed	MONO	Stereo	Original	Copy
NAB	15"				

(A)

Engineering:  
SVEN SUNDBY  
LENNART HAKANSSON

Take No.:  
(Matrix No.):

CONTENTS:

Time:

- |    |                           |  |
|----|---------------------------|--|
| 1. | DREAMSVILLE               |  |
| 2. | SENROR BLUES              |  |
| 3. | LIKE YOUNG                |  |
| 4. | THE BAD AND THE BEAUTIFUL |  |
| 5. | BYE, BYE BLACKBIRD        |  |

THE MONN KEYS

Remarks:

Tails.

632

File No.:

404

(7.913)

Here are  
The Monn Keys.

15"

"Dreamsville"

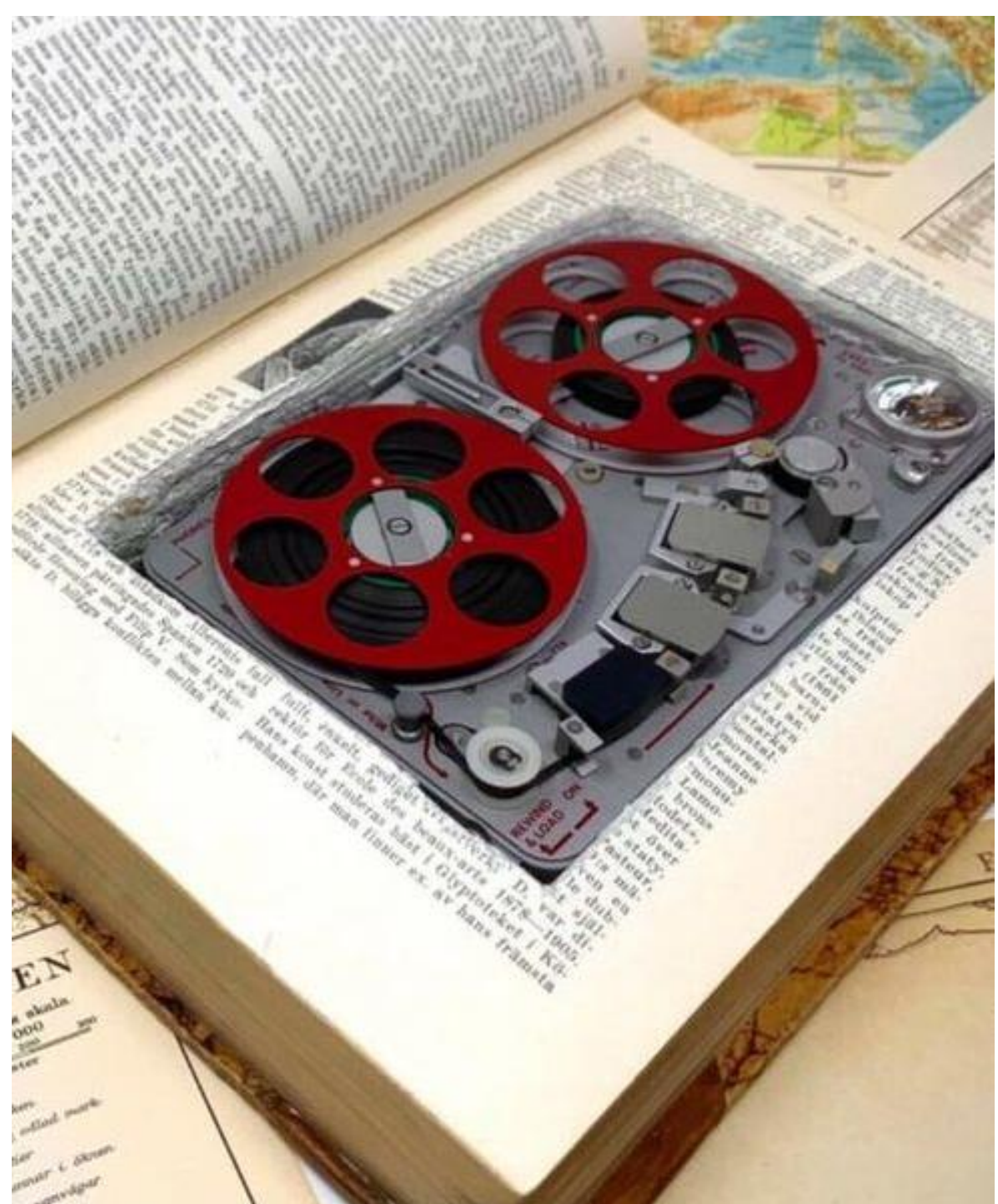
Stereo  
Original-master

Fail out

TAPE →

913







# Noise Reduction



Noise reduction systems
Dolby A
Dolby C
Dolby S
Dolby SR
DBX I
DBX II
Telefunken Telcom
Telefunken Highcom

2877 -

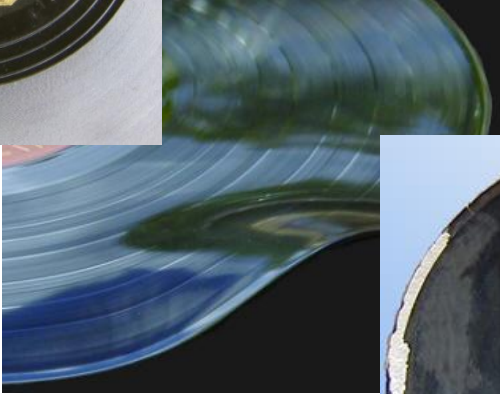
II - III

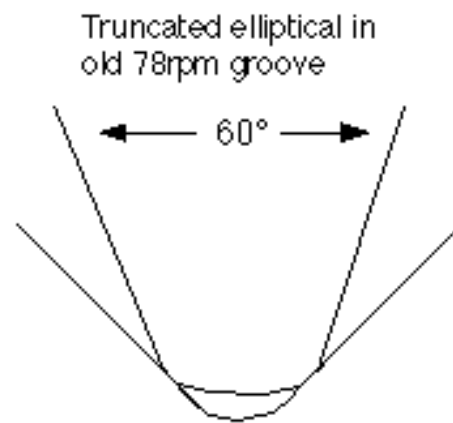
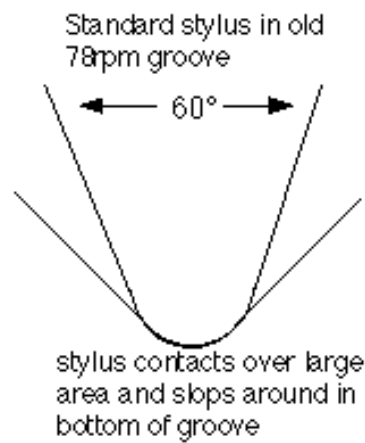
2 Eksp.

2877 -

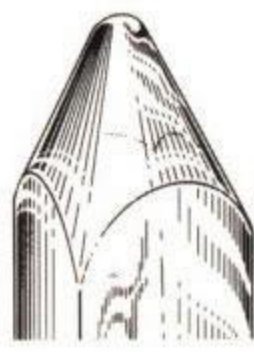
II - III 2 Eksp.







**MicroLine™**



**Linear Contact**



**Elliptical**



**Conical**

# Equalizer

